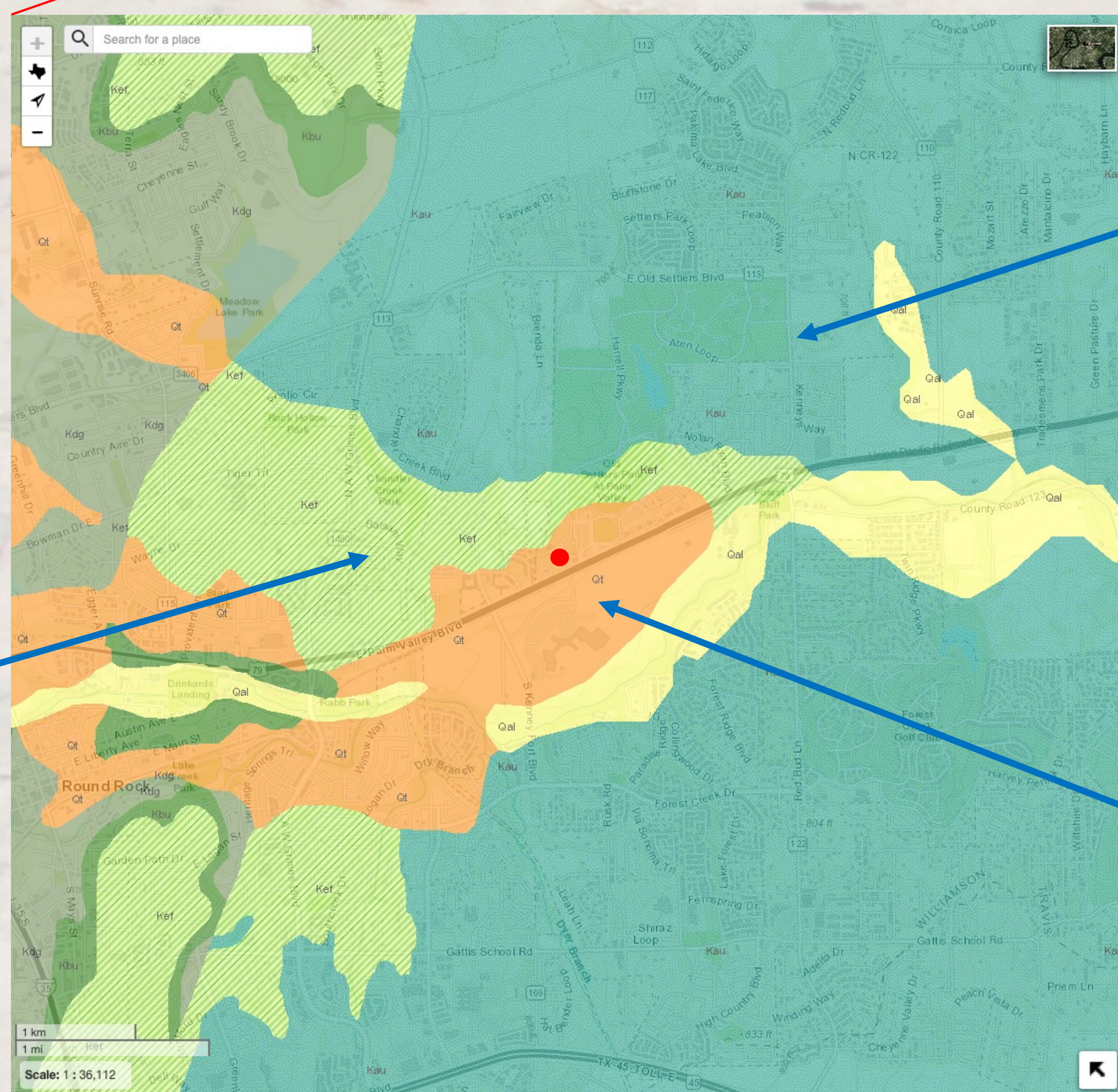


★ ★ ★ ★ ★ ★ ★ ★ ★ ★ Paleontological Society of Austin ★ ★ ★ ★ ★ ★ ★ ★ ★ ★

- Where can I find fossils?
- How old are the local rocks?
- What formation is this?



Type in an address:
3300 E Palm Valley Blvd
Round Rock, TX

Paper geological maps of Texas can be purchased at the Bureau of Economic Geology website.





Rock Unit Name	Austin Chalk
Rock Unit Code	Kau
Sheet Name	Austin
Period	Cretaceous
Epoch or Series	Gulfian
Group	Austin Group
Geo-Order Number	7129

Chalk and marl; chalk mostly microgranular calcite with minor Foraminifera tests and Inoceramus prisms, averages about 85 percent calcium carbonate, ledge forming grayish white to white; alternates with marl, bentonitic seams locally extensive, medium gray quartz nodules.

 Zoom  Close

Rock Unit Name	Fluvialite terrace deposits
Rock Unit Code	Qt
Sheet Name	Austin
Period	Quaternary
Epoch or Series	Pleistocene
Group	N/A
Geo-Order Number	33

Terraces along streams, consist of three or more levels which may correspond to coastal Pleistocene units; gravel, sand, silt, and clay in various proportions with gravel more prominent in the older, higher terraces. Gravel along

 Zoom
  Close

